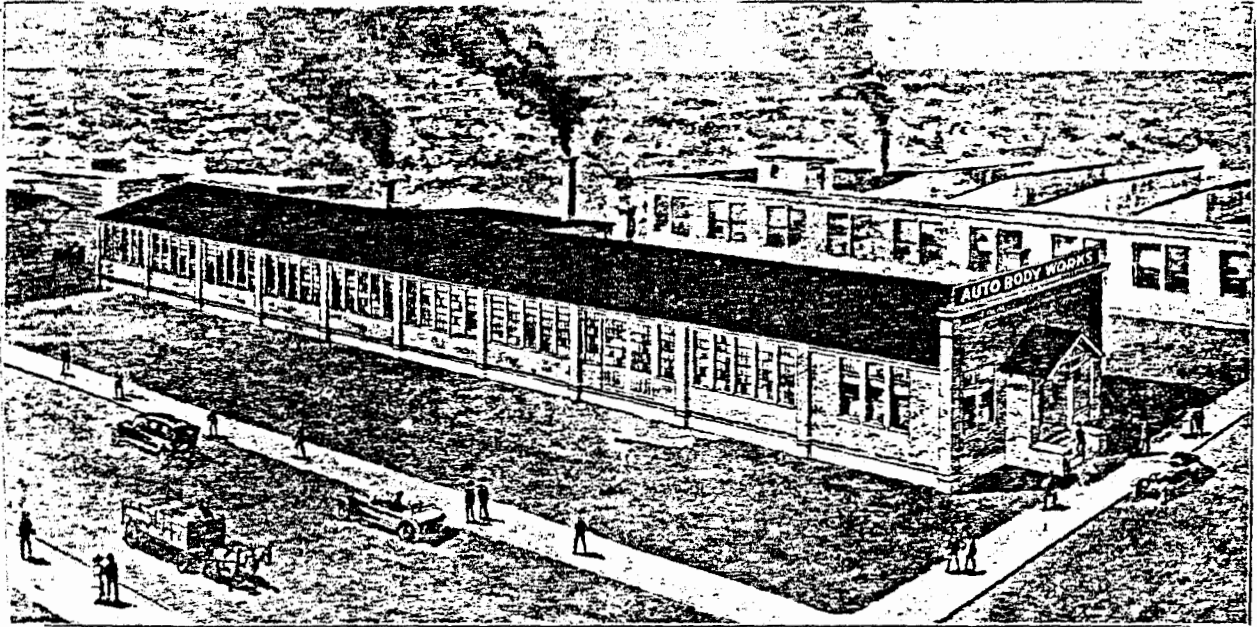


# The AUTO BODY WORKS, Inc.

Corner Pierce Avenue and Eighth Street

APPLETON, WIS.

TELEPHONE No. 695



## "Quality Brand" Bodies

FOR

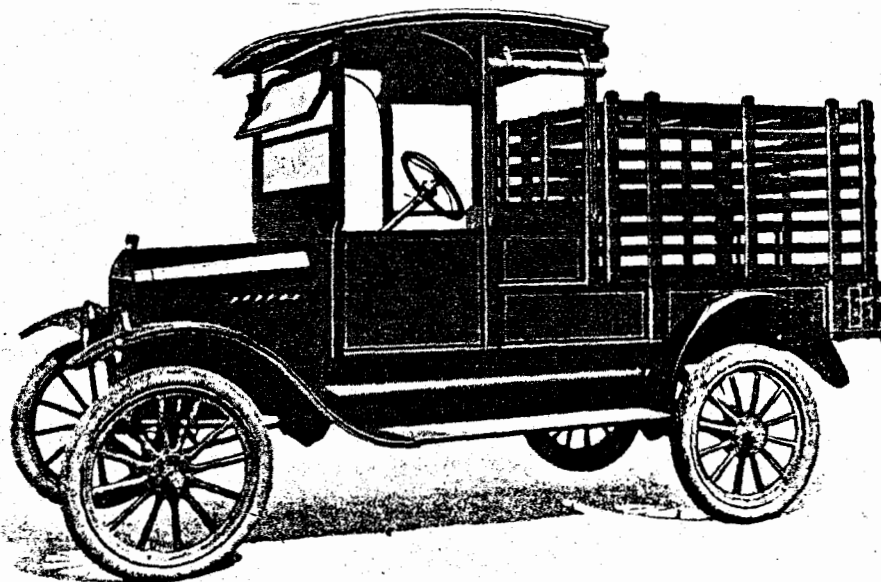
FORD MODEL T TRUCK CHASSIS

No. 18

COMMERCIAL  
FARM AND STOCK  
BODY

\$ 143.00

CAB AND STAKE RACK



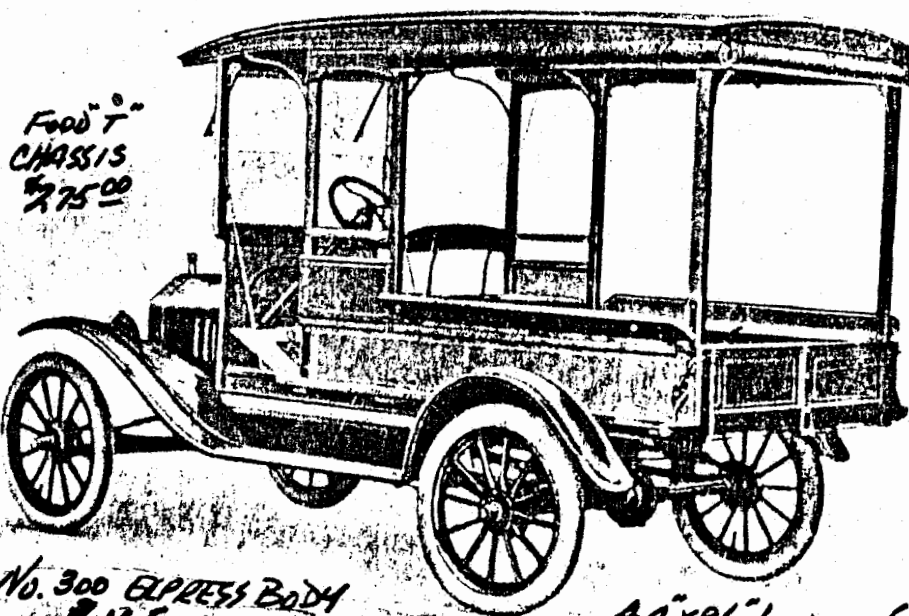
*We build our bodies of Selected White Oak and Hard Maple. Why pay as much or more for bodies built of soft woods.*

# "1919" EXPRESS BODY (REPLICA)

NO. 300 (BODY ONLY 160<sup>00</sup> 1923)

LIST PRICE \$575<sup>00</sup>  
(1924 PRICE)

By  
AUTO BODY WORKS, INC.  
NOW PIERCE MANUFACTURING, INC.



Ford T  
CHASSIS  
\$275<sup>00</sup>

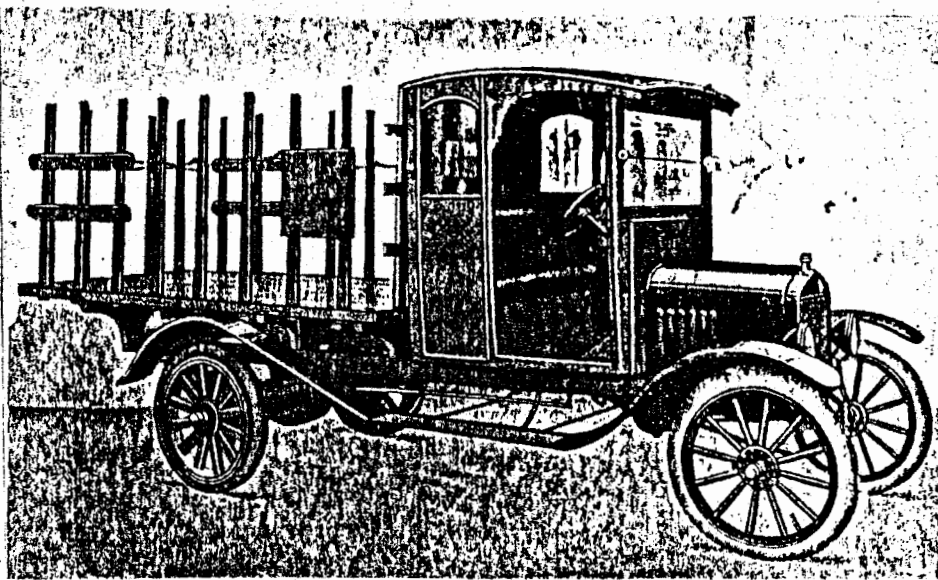
No. 300 EXPRESS BODY  
\$165<sup>00</sup>

44" x 96" Loading Space

WOOD BODIES WERE BUILT BY "PIERCE MFG., INC.", THEN AUTO BODY WORKS, UP UNTIL LATE 1930'S. A FULL COMPLIMENT OF BODIES FOR FORD COMPANY MODEL "T'S" ALONG WITH SPECIAL BODIES ON OTHER TRUCK CHASSIS BUILDERS WERE BUILT BY "PIERCE" CRAFTSMAN.

#50 PLATFORM WITH  
STAKES  
5'-8" WIDE 8' LONG  
\$69.00

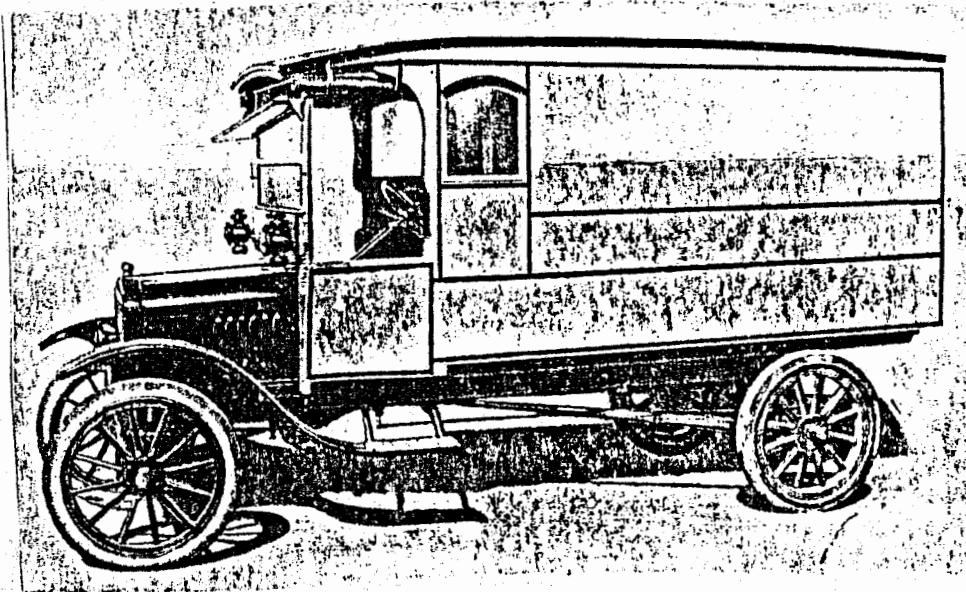
#60 CAB \$69.00



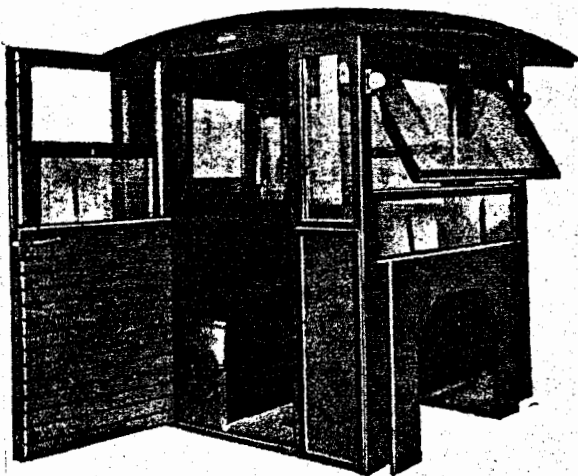
#21A  
SPECIAL ENCLOSED  
BODY AND CAB

"SPECIAL DESIGN"

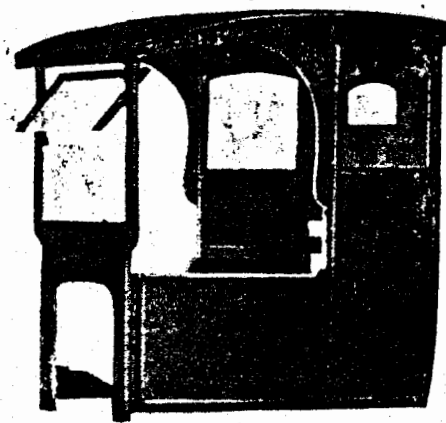
\$159.25



#65  
FULLY  
ENCLOSED  
CAB  
\$70.00



#60  
OPEN  
CAB  
\$65.00



The AUTO BODY WORKS, Inc.

Corner Pierce Avenue and Eighth Street  
ANDERSON, WISC

**Effective Oct. 15, 1924**

This Supersedes All Previous  
Price Lists

# Retail Prices

—ON—

**"Quality Brand"**

**Bodies**

FOR

**FORD MODEL T AND  
TON TRUCK CHASSIS**

Manufactured and Guaranteed  
By

**The AUTO BODY WORKS, Inc.**

Corner Pierce Avenue and Eighth Street

APPLETON, WIS.

TELEPHONE No. 695

## CURTAINED AND PANEL BODIES FOR TON TRUCKS

Note. All Panel and Express Bodies are now built 96" loading space		Price
No.		
300	Canopy Top 8 Post Express Body. Loading space 44x96". Driver's Storm Curtains .....	150.00
300A.	Canopy Top Passenger and Express Body, complete with Driver's Storm Curtains.....	165.50
	Note. No. 300A with full vestibule cab.....	185.00
303	Open Express Body. Same as No. 300, no top or windshield.....	70.00
305	Same as No. 300, except has full vestibule cab with curtain back of drivers seat.....	152.50
	Note. If solid back with sliding window back of drivers seat is wanted, add.....	10.00
301	Panel Body. Open front, complete with Drivers Storm Curtains.....	156.25
302	Panel Body. Fully enclosed.....	170.00
302A.	Fully enclosed Panel Body for Ton Truck. Loading space 44x96". Same design as No. 21A. Shown in catalogue on page eleven.....	190.00
307	Semi-enclosed Panel Body. Upper half equipped with screens and fully curtained.....	200.00
307A:	Same as No. 307 except has full vestibule front....	212.50

Note. Fenders are extra on all jobs where required.

*Painting. Standard colors — Cypress green, silver gray, maroon and golden brown.*

*We give choice of these colors and make no extra charge.*

*No charge for installing bodies at factory.*

## LETTERING PRICES.

COMMON PAINT. Per letter 2 and 3 inch, 10c; 4 and 5 inch, 12½c; 5 to 7 inch, 15c.

GOLDLEAF. Per letter, 2 inch, 12½c; 2½ inch, 15c; 3 inch, 17½c; 4 inch, 20c; 5 inch, 25c.

## ACCESSORIES.

No.		Price
1	Crown Rear Fenders for Light Delivery Chassis, per pair.....	7.50
2	Crown Rear Fenders for Ton Truck, Panel and Express Bodies, per pair.....	7.50
7	Windshield complete with filler board.....	15.00
9	Filler Boards, each.....	3.00
8	Extra Passenger Seats for use on bodies No's. 5, 10, 15, 15B, and 15C, each.....	18.00
	Drivers Storm Curtains, per pair.....	7.50
	Spring Seat Cushions, one piece.....	7.50
	Full Box Spring Seat Cushions, two piece.....	10.00

All bodies are made and guaranteed to fit the regular Ford Model T and One Ton truck chassis.  
All prices include built-in full ventilating windshield.

We are always pleased to give you figures on any kind of

**Special Body, Special Lettering,  
Designs or Trade Marks**

*We build our bodies of Selected White Oak and Hard Maple. Why pay as much or more for bodies built of soft woods.*

No.	Price
17 Commercial body same as No. 15, without top, curtains and windshield.....	52.00
18 Commercial Farm and Stock Body.....	143.00
Note. Driver's Storm curtains for Nos. 15, 15A and 18, extra.....	8.00

#### PANEL BODIES FOR FORD MODEL T CHASSIS.

19 Curved open front Panel body, complete with Driver's storm curtains.....	146.25
20 Semi-enclosed Panel Body, complete with drivers storm curtains.....	143.00
20A. Same as No. 20 except upper half of panels is screened and curtained.....	170.00
20B. Same as No. 20A with full vestibule front.....	190.00
21 Fully enclosed Panel Body.....	152.75
21A. Fully enclosed Panel Body "Special design".....	159.25
22 Combination Passenger and Express Body complete with storm curtains.....	155.35
22A. Same as No. 22 except has full vestibule driving compartment equipped with doors and windows..	169.00

#### ONE TON TRUCK CABS.

60 Open cab, complete with all curtains, fully upholstered reclining back.....	65.00
65 Fully enclosed Cab.....	70.00
62 Special fully enclosed Cab.....	78.00

#### PLATFORMS

No.	Price
50 Standard size platform without stakes 5' 8" wide by 8' long.....	45.00
51 Dairy Platform 5' 8" wide by 8' long complete with stakes 32" above floor.....	69.00
53 Full Panel Platform 5' 8" wide by 8' long complete with stake panels 32" above floor .....	69.00
54 Standard Size platform with Cattle Rack.....	100.00
Note. If wider than standard size platforms are desired, not to exceed 72", add.....	7.50
If higher stakes are wanted on any of above platforms, not to exceed 48" overall, add.....	7.50
We can equip all Ton Truck Platforms and Express Bodies with One Minute Dumping Device. If wanted, add to regular price.....	25.00

#### EXPRESS BODIES.

30 Open Express Body 44x96".....	58.50
31 Open Express Body 44x96", 14" panels 7" flareboards.....	63.70
35 Heavy Type Express Body, 54x96" (No fenders required).....	75.40
35A. Heavy Type Express Body, with Cattle Rack (No fenders required).....	100.00
55 Combination Express and Stake Body.....	81.25

All prices F. O. B. Appleton, Wis.

Prices subject to change without notice.

Terms:—20% cash with order, balance sight draft with bill of lading attached.

#### SLIP-ON BODIES FOR FORD ROADSTERS

No.	Price
5 Small size Slip-on Body, 34x54".....	15.00
10 Large size Slip-on Body, 34x60".....	17.50

#### BODIES FOR FORD MODEL T CHASSIS.

15 Commercial Body with Canopy top, less Driver's Storm Curtains and Fenders.....	\$110.00
15A. Same as No. 15, except has 18" side panels and no flareboards.....	117.00
15B. Same as No. 15, except has full vestibule cab, fully upholstered back and sliding window at rear.....	136.50
Note. No. 15B body with full vestibule front but rear of Driver's seat open, and seat equipped with folding lazyback.....	124.80
15C. Same as No. 15B with semi-enclosed cab, equipped with windows on each side of drivers seat, drivers storm curtains and curtain back of drivers seat.....	120.25
16 Commercial body same as No. 15 with curtain equipped cab and built-in windshield, no top over loading space.....	100.75

## CURTAINED AND PANEL BODIES FOR TON TRUCKS

Note. All Panel and Express Bodies are now built 96" loading space	
No.	Price
300	Canopy Top 8 Post Express Body. Loading space 44x96". Driver's Storm Curtains..... 118.50
300A.	Canopy Top Passenger and Express Body, complete with Driver's Storm Curtains..... 132.50
	Note. No. 300A with full vestibule cab..... 147.50
303	Open Express Body. Same as No. 300, no top or windshield..... 55.00
305	Same as No. 300, except has full vestibule cab with curtain back of drivers seat..... 122.50
	Note. If solid back with sliding window back of drivers seat is wanted, add..... 7.50
301	Panel Body. Open front, complete with Drivers Storm Curtains..... 125.00
302	Panel Body. Fully enclosed..... 137.50
302A.	Fully enclosed Panel Body for Ton Truck. Loading space 44x96". Same design as No. 21A. Shown in catalogue on page eleven..... 152.50
307	Semi-enclosed Panel Body. Upper half equipped with screens and fully curtained..... 160.00
307A.	Same as No. 307 except has full vestibule front.... 172.50
Note. Fenders are extra on all jobs where required.	
<i>Painting. Standard colors — Cypress green, silver gray, maroon and golden brown.</i>	
<i>We give choice of colors and make no extra charge.</i>	
<i>No charge for installing bodies at factory.</i>	

## LETTERING PRICES.

COMMON PAINT. Per letter 2 and 3-inch, 7½¢; 4 and 5 inch, 10¢; 5 to 7 inch, 12½¢.

GOLDLEAF. Per letter, 2 inch, 10¢; 2½ inch, 12½¢; 3 inch, 15¢; 4 inch, 17¢; 5 inch, 20¢.

## ACCESSORIES.

No.	Price
1	Crown Rear Fenders for Light Delivery Chassis, per pair..... 5.00
2	Crown Rear Fenders for Ton Truck, Panel and Express Bodies, per pair..... 5.00
7	Windshield complete with filler board..... 11.25
9	Filler Boards, each..... 2.00
8	Extra Passenger Seats for use on bodies No's. 5, 10, 15, 15B, and 15C, each..... 14.00
	Drivers Storm Curtains, per pair..... 6.00
	Spring Seat Cushions, one piece..... 6.00
	Full Box Spring Seat Cushions, two piece..... 8.00

All bodies are made and guaranteed to fit the regular Ford Model T and One Ton truck chassis.  
All prices include built-in full ventilating windshield.

We are always pleased to give you figures on any kind of

**Special Body, Special Lettering,  
Designs or Trade Marks**

*We build our bodies of Selected White Oak and Hard Maple. Why pay as much or more for bodies built of soft woods.*

**Effective Oct. 15, 1924**

This Supersedes All Previous  
Price Lists

**DEALERS'**  
**Confidential**

**PRICE LIST**

**"Quality Brand"**  
**Bodies**

FOR

**FORD MODEL T AND  
TON TRUCK CHASSIS**

Manufactured and Guaranteed  
By

**The AUTO BODY WORKS, Inc.**

Corner Pierce Avenue and Eighth Street

**APPLETON, WIS.**

**TELEPHONE No. 695**



### PLATFORMS

No.		Price
50	Standard size platform without stakes 5' 8" wide by 8' long.....	35.00
51	Dairy Platform 5' 8" wide by 8' long complete with stakes 32" above floor.....	51.75
53	Full Panel Platform 5' 8" wide by 8' long complete with stake panels 32" above floor .....	51.75
54	Standard Size platform with Cattle Rack.....	76.75
	Note. If wider than standard size platforms are desired, not to exceed 72", add.....	5.00
	If higher stakes are wanted on any of above platforms, not to exceed 48" overall, add.....	6.00
	We can equip all Ton Truck Platforms and Express Bodies with One Minute Dumping Device. If wanted, add to regular price.....	18.00

### EXPRESS BODIES.

30	Open Express Body 44x96".....	45.00
31	Open Express Body 44x96", 14" panels 7" flareboards.....	49.00
35	Heavy Type Express Body, 54x96" (No fenders required).....	58.00
35A.	Heavy Type Express Body, with Cattle Rack (No fenders required).....	78.00
55	Combination Express and Stake Body.....	62.50

No.		Price
17	Commercial body same as No. 15, without top, curtains and windshield.....	40.00
18	Commercial Farm and Stock Body.....	110.00
	Note. Driver's Storm curtains for Nos. 15, 15A and 18, extra.....	6.00

### PANEL BODIES FOR FORD MODEL T CHASSIS.

19	Curved open front Panel body, complete with Driver's storm curtains.....	112.50
20	Semi-enclosed Panel Body, complete with drivers storm curtains.....	110.00
20A.	Same as No. 20 except upper half of panels is screened and curtained.....	135.00
20B.	Same as No. 20A with full vestibule front.....	150.00
21	Fully enclosed Panel Body.....	117.50
21A.	Fully enclosed Panel Body "Special design".....	122.50
22	Combination Passenger and Express Body complete with storm curtains.....	119.50
22A.	Same as No. 22 except has full vestibule driving compartment equipped with doors and windows..	130.00

### ONE TON TRUCK CABS.

60	Open cab, complete with all curtains, fully upholstered reclining back.....	51.00
65	Fully enclosed Cab.....	55.10
62	Special fully enclosed Cab.....	62.50

All prices F. O. B. Appleton, Wis.

Prices subject to change without notice

Terms:—20% cash with order, balance sight draft with bill of lading attached.

### SLIP-ON BODIES FOR FORD ROADSTERS

No.		Pri
5	Small size Slip-on Body, 34x54".....	10.
10	Large size Slip-on Body, 34x60".....	12.

### BODIES FOR FORD MODEL T CHASSIS.

15	Commercial Body with Canopy top, less Driver's Storm Curtains and Fenders.....	\$85.0
15A.	Same as No. 15, except has 18" side panels and no flareboards.....	90.0
15B.	Same as No. 15, except has full vestibule cab, fully upholstered back and sliding window at rear.....	105.0
	Note. No. 15B body with full vestibule front but rear of Driver's seat open, and seat equipped with folding lazyback.....	96.0
15C.	Same as No. 15B with semi-enclosed cab, equipped with windows on each side of drivers seat, drivers storm curtains and curtain back of drivers seat.....	92.5
16	Commercial body same as No. 15 with curtain equipped cab and built-in windshield, no top over loading space.....	77.5