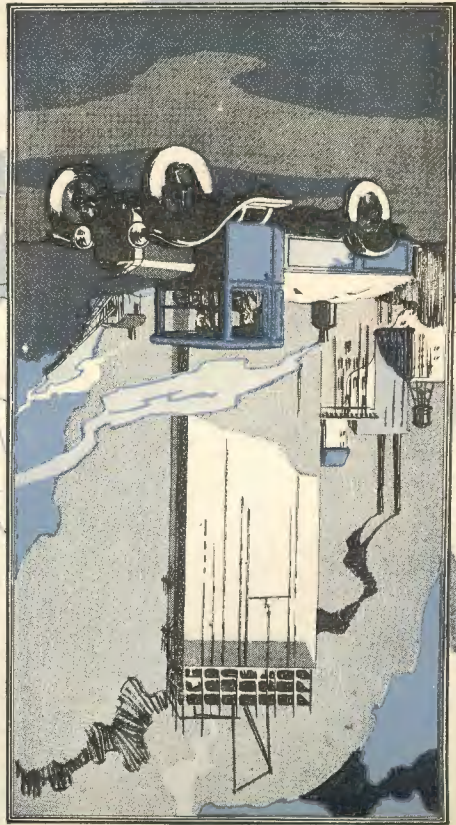
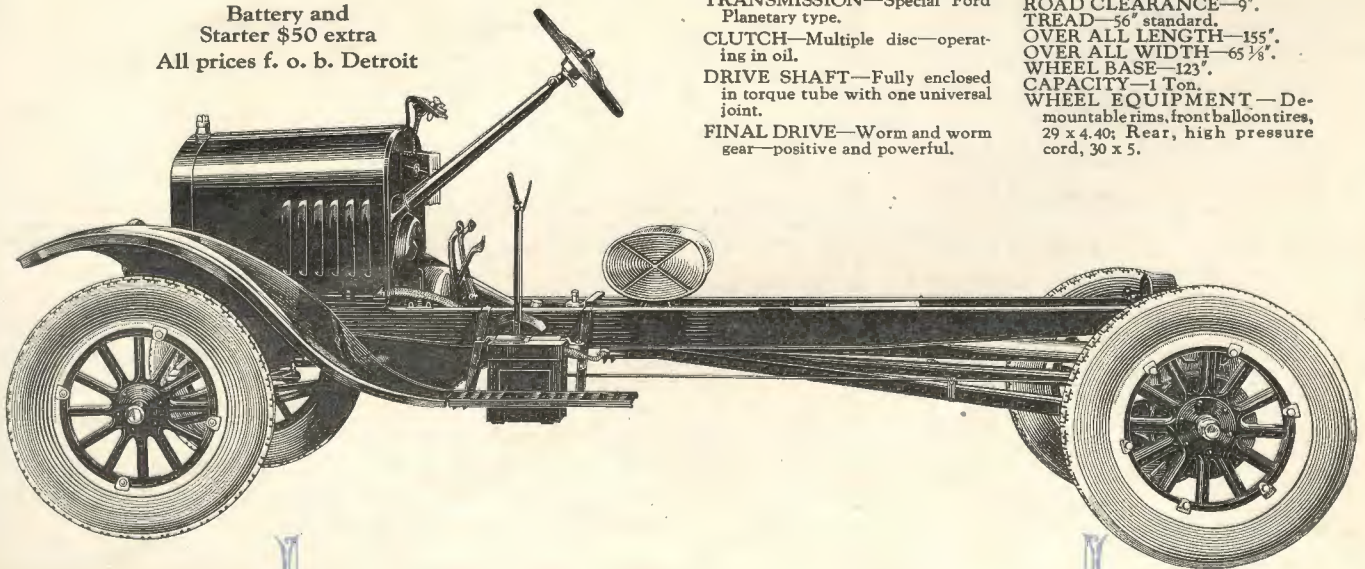


The Universal Truck



Ford Ton Truck Chassis \$325

Battery and
Starter \$50 extra
All prices f. o. b. Detroit



Specifications of the Ford Ton Truck

MOTOR—Four cylinders—Cylinders cast en bloc, Bore, $3\frac{3}{4}$ " stroke, 4"; horsepower 22 $\frac{1}{2}$ S.A.E.

IGNITION—Magneto; special Ford design. Storage battery if starter is installed giving two unit system.

LUBRICATION—Splash system—capacity 1 gallon light engine oil.

COOLING SYSTEM—Tubular radiator, Thermo-Syphon with four blade fan, capacity 13 quarts.

TRANSMISSION—Special Ford Planetary type.

CLUTCH—Multiple disc—operating in oil.

DRIVE SHAFT—Fully enclosed in torque tube with one universal joint.

FINAL DRIVE—Worm and worm gear—positive and powerful.

REAR AXLE—Semi-floating—gear ratio $7\frac{1}{4}$ to 1. Optional High Speed 5 $\frac{1}{6}$ to 1.

FRAME—Heavy pressed steel channel.

SPRINGS—Transverse type, rear spring in two parts connected at spring seat.

STARTER-GENERATOR (Optional) Screw type starting device. Torque 14 to 16 pounds.

TURNING RADIUS—23' Circle

ROAD CLEARANCE—9".

TREAD—56" standard.

OVER ALL LENGTH—155".

OVER ALL WIDTH—65 $\frac{1}{8}$ ".

WHEEL BASE—123".

CAPACITY—1 Ton.

WHEEL EQUIPMENT—Demountable rims, front balloon tires, 29 x 4.40; Rear, high pressure cord, 30 x 5.

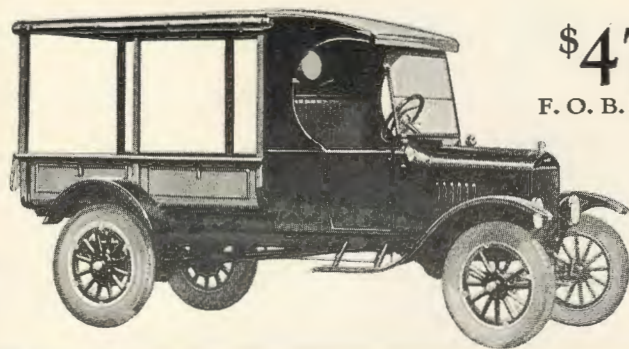
Over One Million

\$465

F. O. B. DETROIT

**Lowest
Dependable**

**SERV
Every**



\$475

F. O. B. DETROIT

BODY DIMENSIONS

Stake Body—Inside dimensions, 5 feet, 8 inches wide by 8 feet, 1½ inches long. From floor to top of rack board, 26 inches. Racks are in six sections, one front and rear and two on each side, all easily removed.

Express Body—Inside dimensions, 4 feet wide by 7 feet, 2 inches long. From floor to top of sides, 12½ inches. Sockets provided for stakes, racks or sideboards. With canopy top and screen sides loading height is four feet, loading space approximately 144 cubic feet.

THE Ford One-Ton Truck is universally recognized as the world's outstanding haulage unit because it stands alone in furnishing low cost transportation.

The significant fact that more than a million Ford trucks are in use makes it apparent at once to any business man in need of truck equipment that the Ford truck must be a transportation unit of unparalleled value.

Ford ton trucks, equipped with standard Ford bodies, meet almost every haulage requirement and in every line of business where they

Ford Trucks Now in Use

**Lowest Cost
in Operation**

**SERVICE
Everywhere**

\$475 F. O. B.
DETROIT



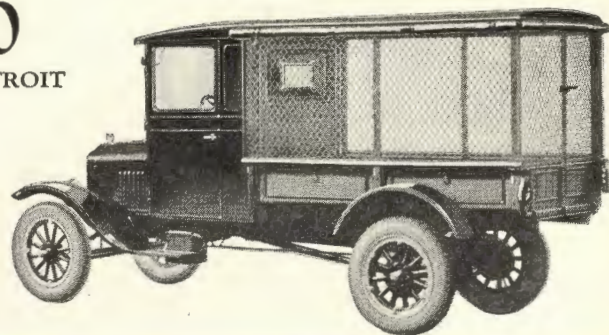
are used delivery costs are at the minimum.

Low first cost, dependable performance, and small upkeep expense have made Ford trucks the outstanding choice of truck users everywhere.

Another feature that has added to the popularity of these trucks is reliable service which is always near and easily obtained. This means that replacement parts can be secured without delay and repairs made quickly.

When haulage units are considered, common sense dictates that you standardize on Ford One-Ton Trucks.

\$520
F. O. B. DETROIT



TWO TYPES OF CABS

Closed Cab—Designed for all standard Ford body types, providing comfortable driver's compartment with full protection against weather. Seat well cushioned and will accommodate three persons. Cab is of a steel construction with swing type windshield and cowl ventilator. Door windows easily regulated.

Open Cab—Designed to meet working requirements which make preferable to closed cab. Protection from weather provided by heavy curtains which open with doors.

To Invest in Ford One-Ton Trucks is to Improve Your Delivery Service and Lower Your Operating Costs—This Means Greater Efficiency and More Profits in Your Business

