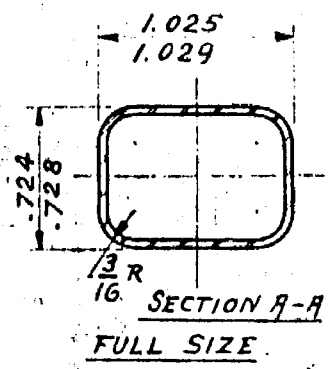
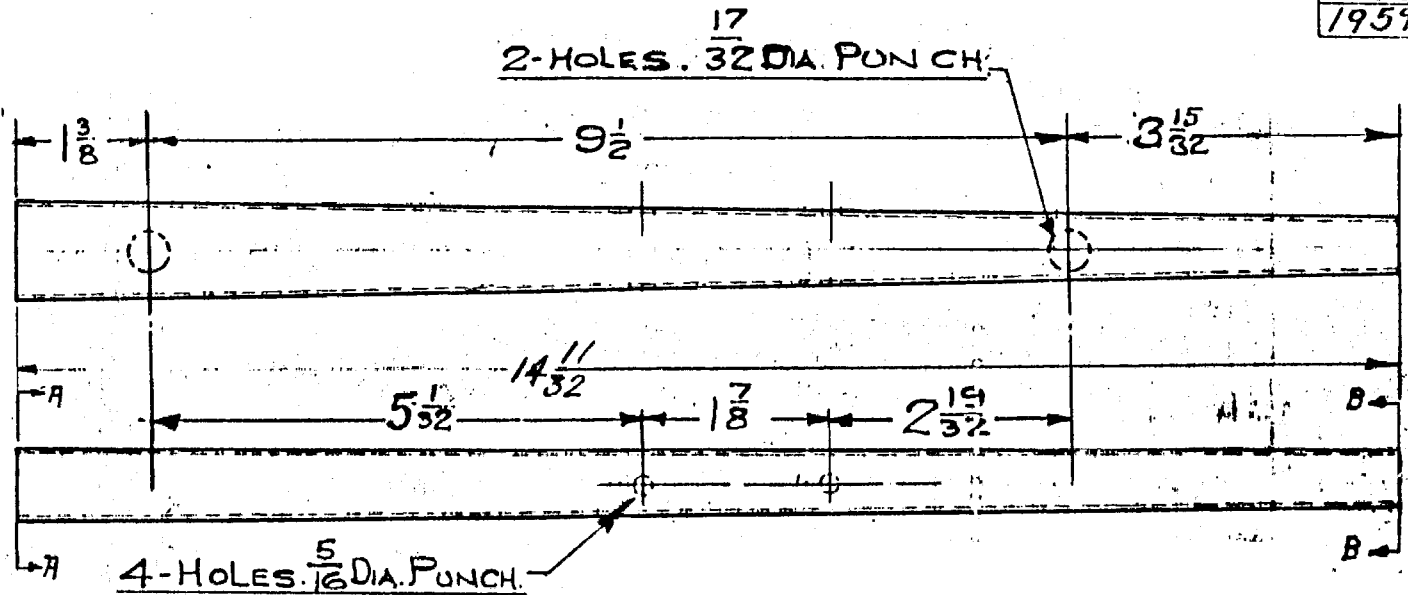


1926	1927	
NO. 1000	MODEL	
2	TOURING TOP	

	AUG-26-25	
	REVISED	CHK
13763	9-16-25	E.A.
13939	9-25-25	EL
17244	4-29-26	J.W.
18501	8-23-26	RL
19332	12-1-26	
19599	1-24-27	



RIB SOCKET #4 REINFORCEMENT

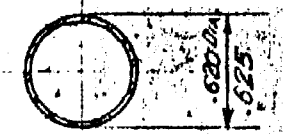
FULL C.R. LOW CARBON O.H. STEEL #18 U.S.S. GR. -.048  
 .050

PHYSICAL PROPERTIES NECESSARY TO FORM PART

AS PER PRINT

STOCK  $\frac{14.5}{16} \times \frac{90}{16} = 39$  BLANKS MULT. OF  $2\frac{5}{16} + \frac{3}{4} = 1$  BLANK  
 $\frac{17}{8} \times \frac{9.12}{16}$

1 STRIP = 18.482 LBS. SHORTEST LENGTH  $60\frac{7}{8} = 26$  BLANKS



SECTION B-B  
 FULL SIZE

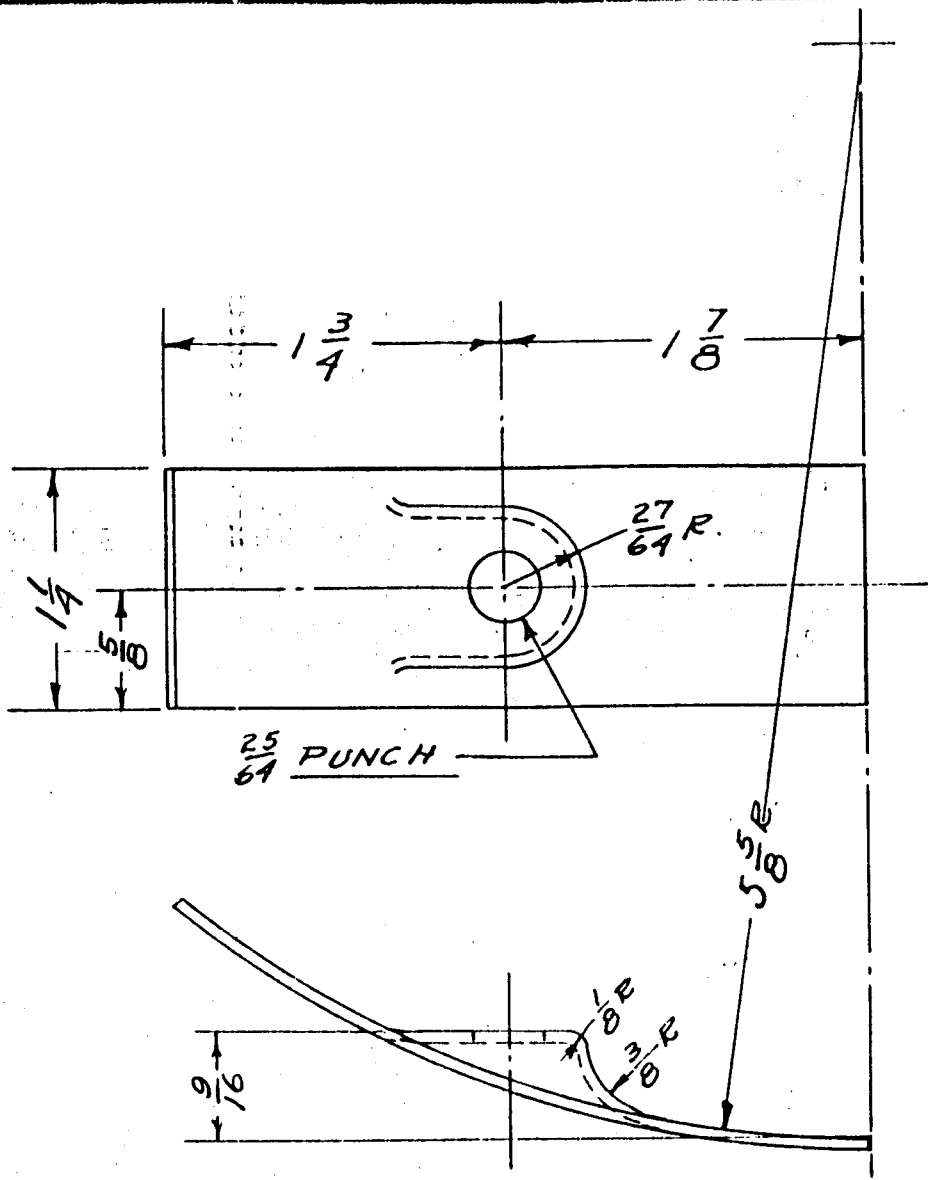
T-41037	DESIGN	OPERATION

SCALE	DR	CK	TR.	CK	O.K.	PCPD MOTOR CO.	T-41037
HALF	ELG	J.W.K.	ST.	add		DETROIT, MICH.	

MATERIAL AND NAME

1926	1927	
NO. PART	MODEL	
2	TOURING TOP	

	ADOPTED	
ENG. DRG.	JUNE 23-25	C.
	7-10-25	EL.
13350	8-17-25	
13561	9-5-25	AKS.
18425	8-18-26	



#3-SHELL REINFORCING BRACKET

ONE PASS C.R. LOW CARBON, O.H. STEEL #16 U.S.S. GR. = .058  
066

PHYSICAL PROPERTIES NECESSARY TO FORM PART AS PER PRINT.

MAKE FROM DASH SURPLUS

MATERIAL AND NAME

T-41039

DESIGN	OPERATION
--------	-----------

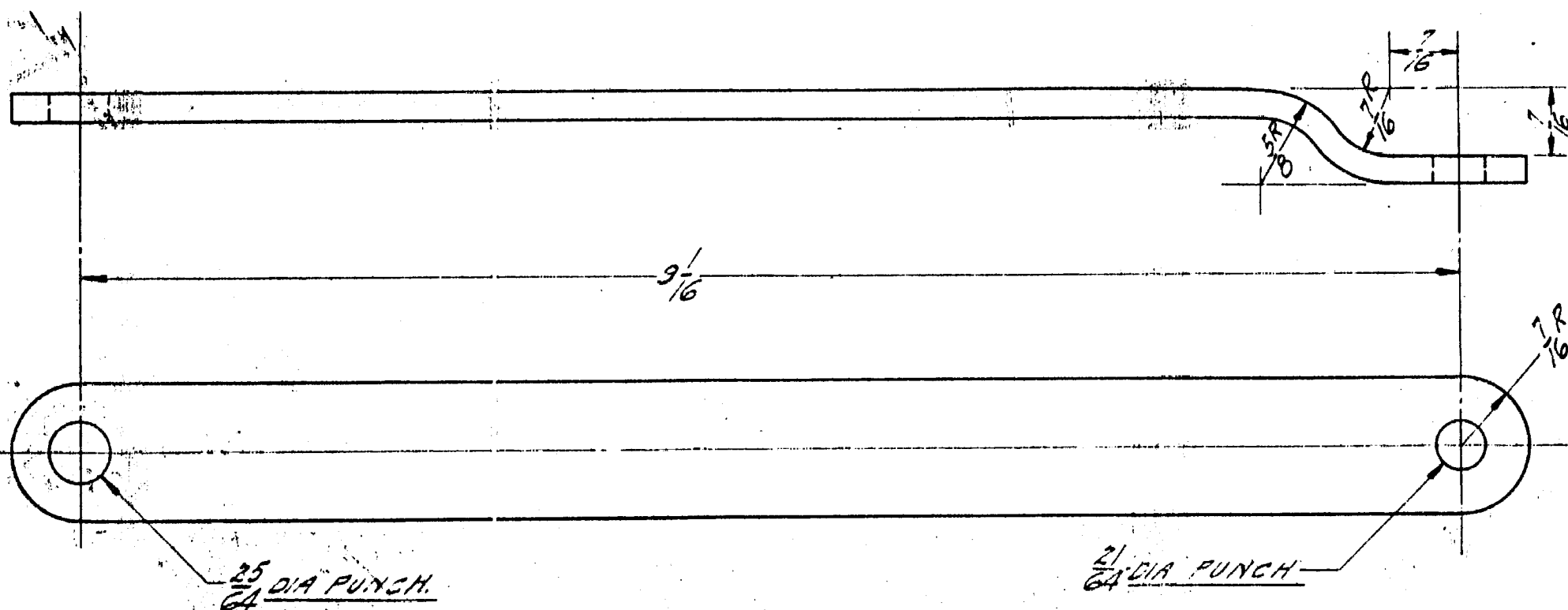
SCALE	DR	CK	TR	CK.	O.K.
-------	----	----	----	-----	------

FORD MOTOR CO.

T-41039

1926	1927
NO. SEC'D	MODEL
2	TOURING TOP

APRIL 1-1925		
ENG. INF.	REVISED	CHK.
FOR PREVIOUS CHANGES SEE RECORD PRINT		
13441	8-31-25	A.E.S.
12715	11-12-25	
17007	4-13-26	
18425	8-18-26	
20159	1-13-30	ALB



CENTER BRACE  
M.R., L.C. QH. STEEL. P. & O. #7 U.S.S. GA. = .187  
PHYSICAL PROPERTIES NECESSARY TO FORM PART.  
MILL EDGE STOCK.  $\frac{7}{8} \times \frac{122}{16} = 12$ -BLANKS

MATERIAL AND NAME

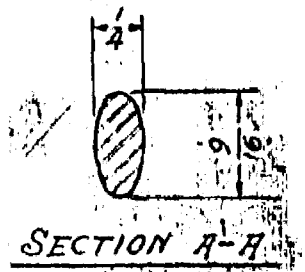
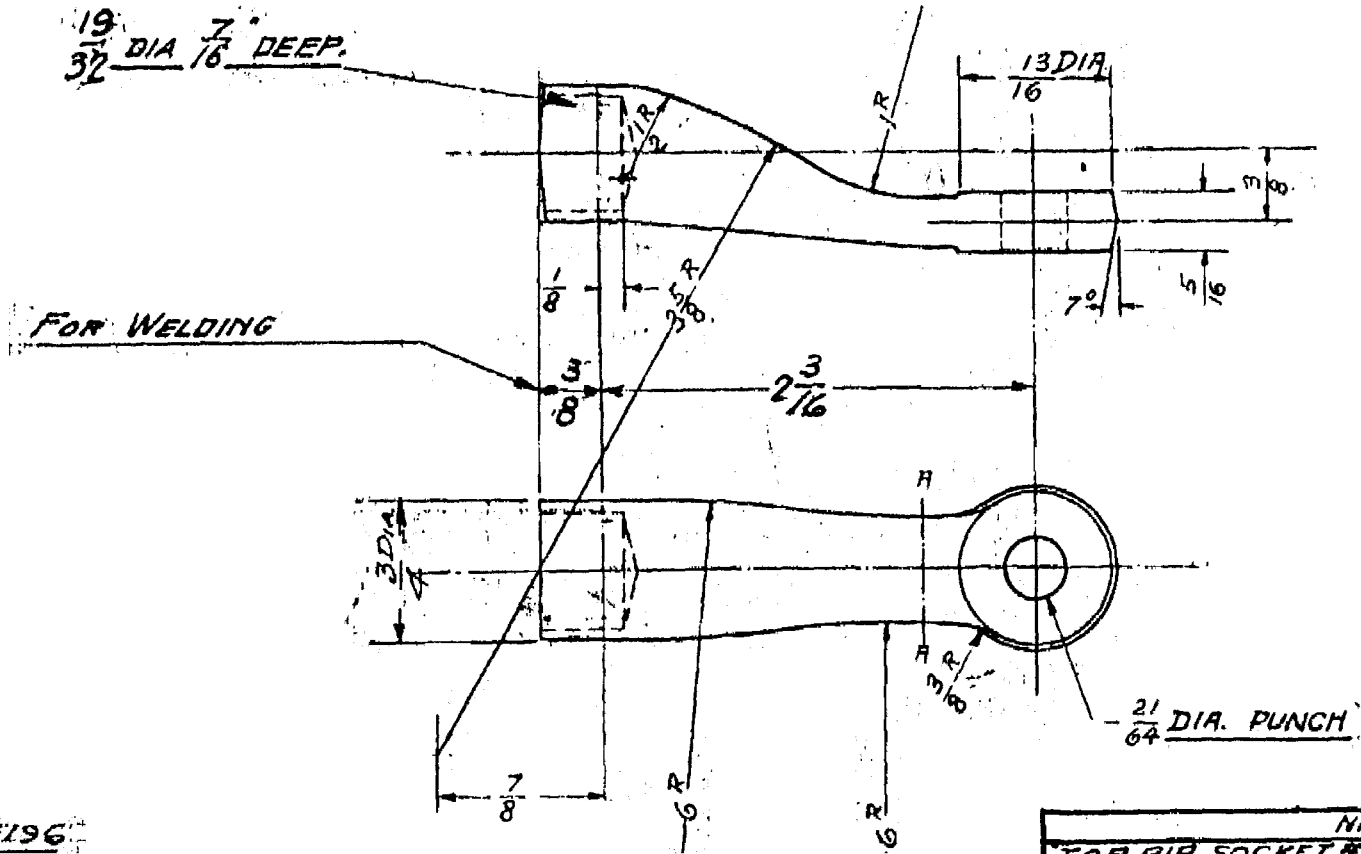
T-1107A

OPERATION

SCALE DR CK TR CK G.A.

FORD MOTOR CO. T-1107A

6176	12-29-27		ENG. INF.	ADOPTED	
6758	1-21-28	GIS		APR. 1-25	
20006	4-23-28	UWK		REVISED	CK.
13350	8-17-25				
16922	7-7-26				
18501	8-23-26				RL
18639	9-2-26				
19017	10-19-26				RL
19193	11-9-26				RL
19271	11-22-26				RL
2588	9-14-27				
4311	11-3-27				



ARNELL 137-196

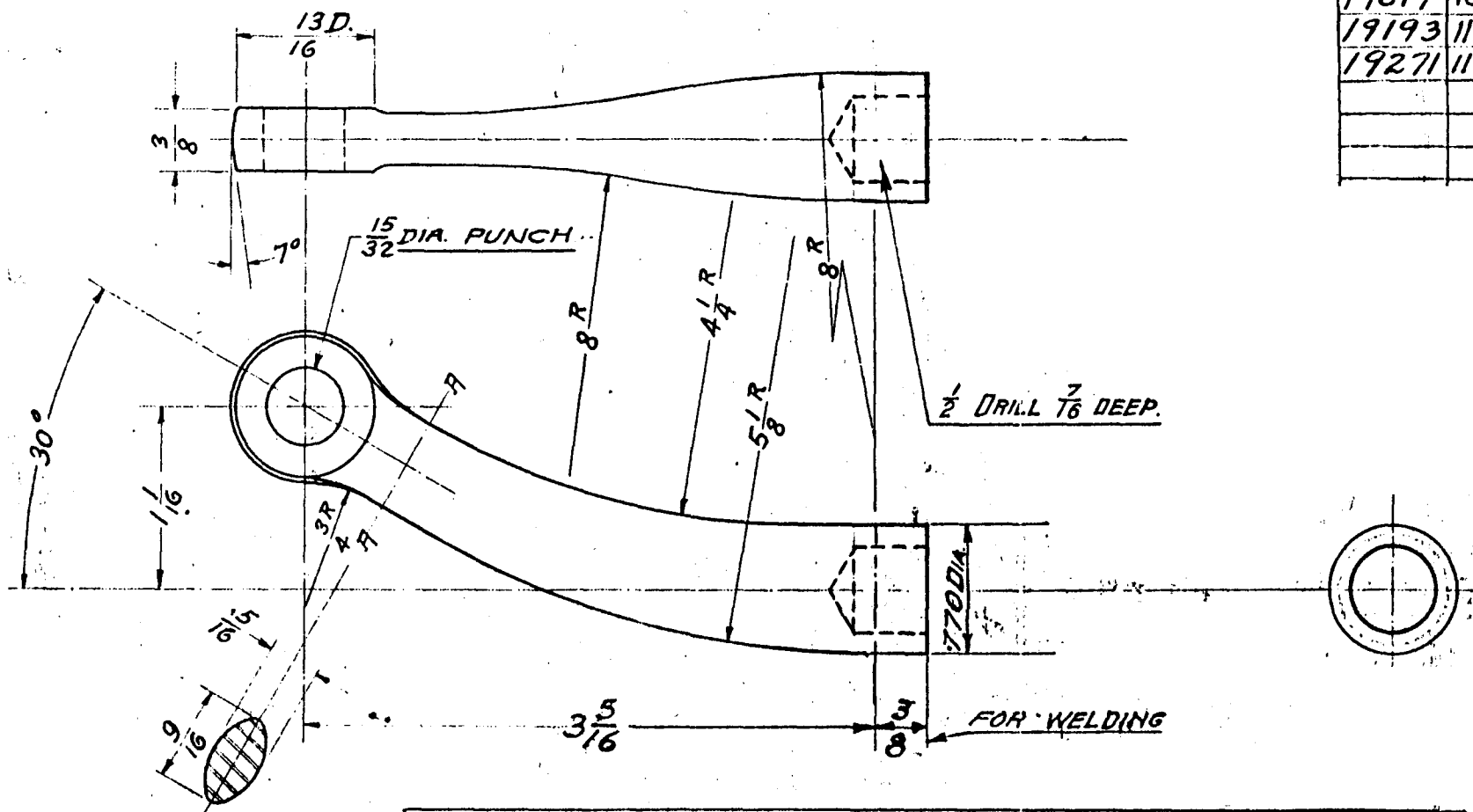
NAME	REQ
TOP RIB SOCKET #1 FOOT TOURING 182627	2
MATERIAL	
DROP FORGING (H.R. STEEL TYPE 'E')	
USE FORGINS A-37355	

DR. LINDA R. B.

SCALE: 1/2" = 1"

1926	1927		
NO.	MODEL		

ENG. INF.	ADOPTED	
	APR. 1-25	W.
	REVISED	CK.
	7-1-25	
	8-3-25	
13350	8-17-25	
18501	8-23-26	RL
18639	9-2-26	
19017	10-19-26	RL
19193	11-9-26	RL
19271	11-22-26	RL



SECTION R-R

NAME		REQ'D
RIB SOCKET # 4 FOOT	TOURING TOP	2

DROP FORGING (H.R. STEEL TYPE 'E')

T-41031

ORIGIN	OPERATION
	FINISH

SCALE	D.R.	CK.	TR.	CK.	D.R.
FULL.	J.W.K.	J.W.K.	ST.	ack	

FORD MOTOR CO.  
DETROIT, MICH.

T-41031

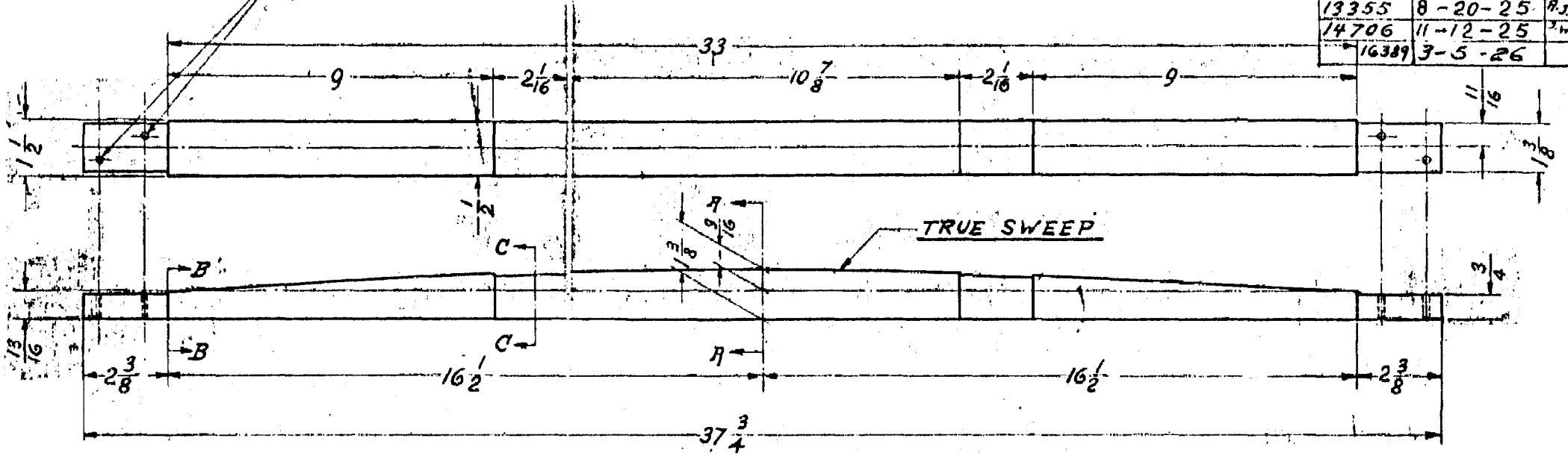
MATERIAL AND NAME



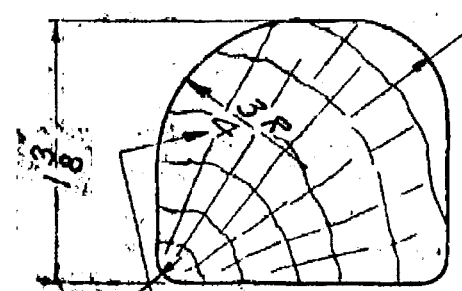
1926	1927	
NO. REQ'D	MODEL	
1	TOURING	

10425	8-18-26	1	ENG. INF.	ADOPTED
				APR-1-1925
				REVISED
				7-16-25
				13350 8-17-25
				13355 8-20-25
				14706 11-12-25
				16389 3-5-26

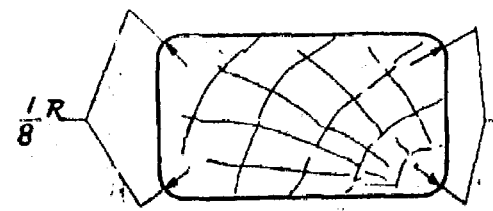
4-HOLES  $\frac{3}{16}$  DIA. TO BE DRILLED IN PLACE  
AFTER ASSEMBLING TO RIB SOCKET



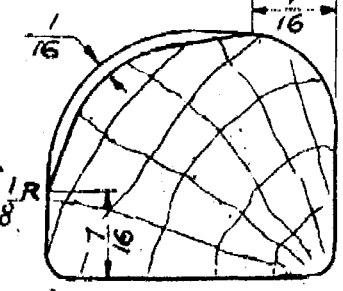
RAD. CHANGES FROM  $\frac{1}{2}$  AT "A-A" TO  $\frac{1}{8}$  AT "B-B"



SECTION A-A  
FULL SIZE



SECTION B-B  
FULL SIZE



SECTION C-C FULL SIZE

RADIUS CHANGES FROM  $\frac{3}{4}$  AT "A-A" TO  $\frac{1}{8}$  AT "B-B"

TOP RIB #4

MUST BE GOOD SOUND

GRADE OF AIR DRIED OAK

J-410355	DESIGN	OPERATION
----------	--------	-----------

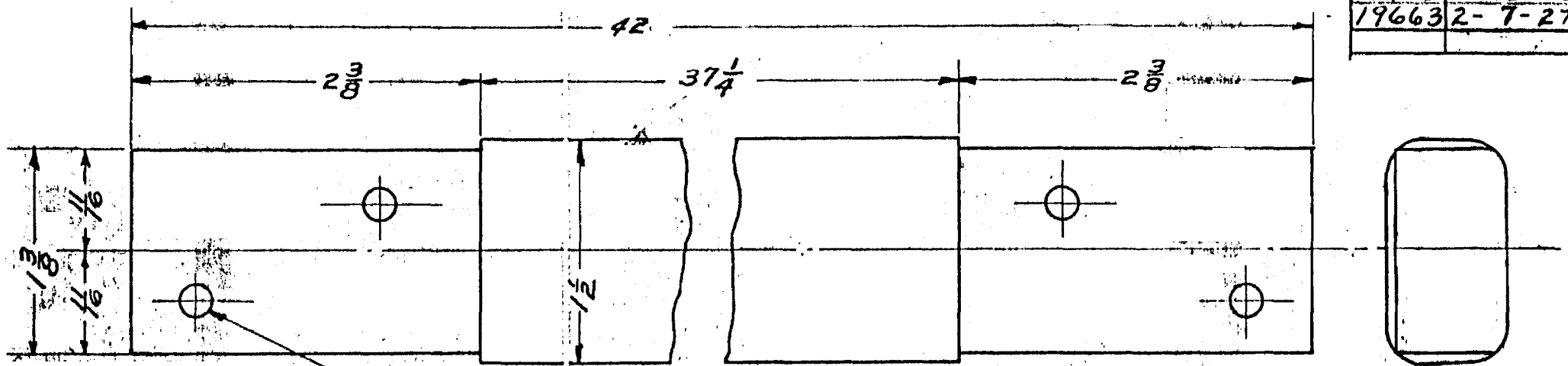
SCALE	DR.	CHK.	TR.	CHK.	O.K.	FORD MOTOR CO.	T-41035
1/2 SIZE	R.E.		ST.	A.P.A.		DETROIT, MICH.	

MATERIAL AND NAME

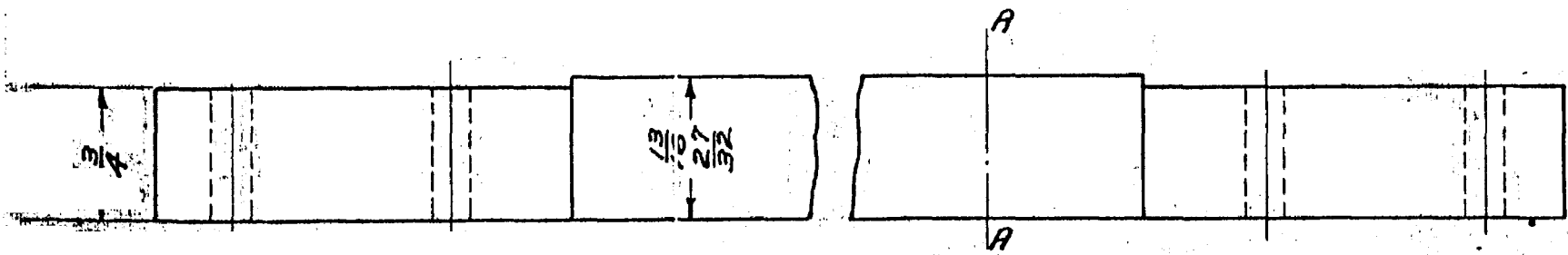


1926	1927	
1	TOURING	

	APR-1-1925	
ENG. INP	REVISED	CK.
13350	8-17-25	
18425	8-18-26	
19663	2-7-27	JWK



4 HOLES  $\frac{3}{16}$  DIA. TO BE DRILLED IN PLACE AFTER ASSEMBLING TO RIB SOCKET



**RIB #2**

**MUST BE GOOD SOUND GRADE OF AIR DRIED OAK.**

T-41033	DESIGN	OPERATION
---------	--------	-----------

SCALE	DR	CK	TR	CK	CK	FORD MOTOR CO	T-41033
FULL	JWK		ANB	QES		DETROIT, MICH.	